



# U.S. Burning Plasma Program Development...

---

*U.S. BURNING PLASMA ORGANIZATION*

R. J. Fonck

for the U.S. Burning Plasma Organization

*presented to*

University Fusion Association

Meeting

Philadelphia, PA

Oct. 30, 2006



# USBPO Formed to Organize BP Research Activities

---

*U.S. BURNING PLASMA ORGANIZATION*

Mission:

*Advance the scientific understanding of burning plasmas and ensure the greatest benefit from a burning plasma experiment by coordinating relevant U.S. fusion research with broad community participation.*

**info in this talk: <http://www.burningplasma.org>**



# US Burning Plasma Organization: What's Happened Since Last UFA Meeting?

*U.S. BURNING PLASMA ORGANIZATION*

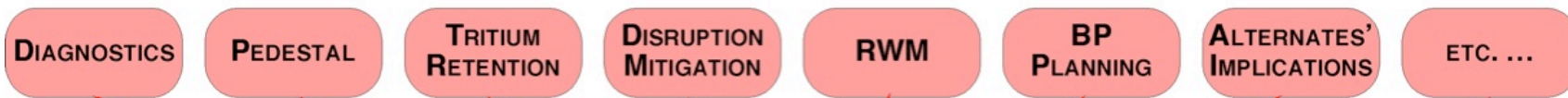
- Community discussions on what to do
  - 1st BP Workshop at ORNL in Dec, 2005
- Building the organization
  - Structural elements: Council, Topical Groups, etc.
  - Communications tools
- Addressing near-term research needs
  - First cut at a BP Research Plan: EAct Task Group
  - ITER Physics Tasks
  - ITER Design Review Process
- Starting technical/research activities
  - Identifying and coordinating broader BP research tasks



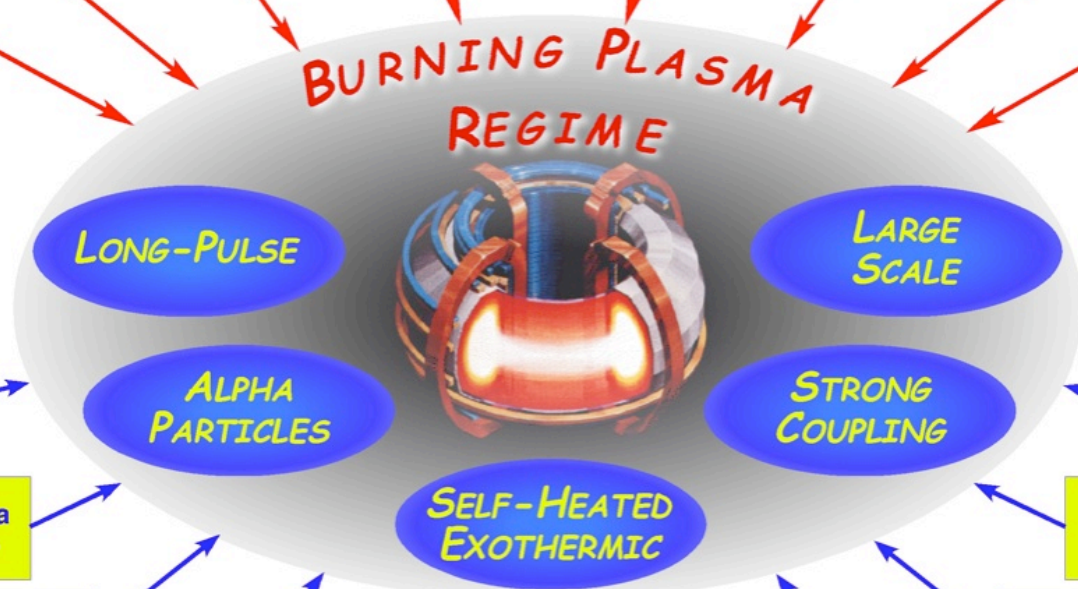
# Address BP-Relevant Issues by Combining Community Expertise

U.S. BURNING PLASMA ORGANIZATION

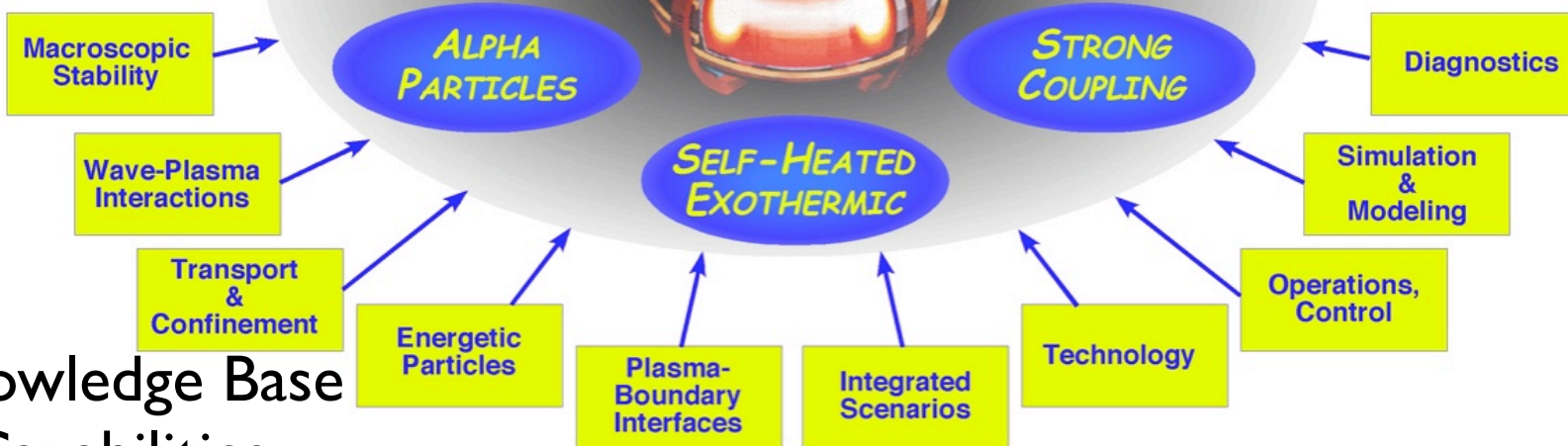
USBPO CAMPAIGNS, TASKS (E.G.)



Problems to Address...



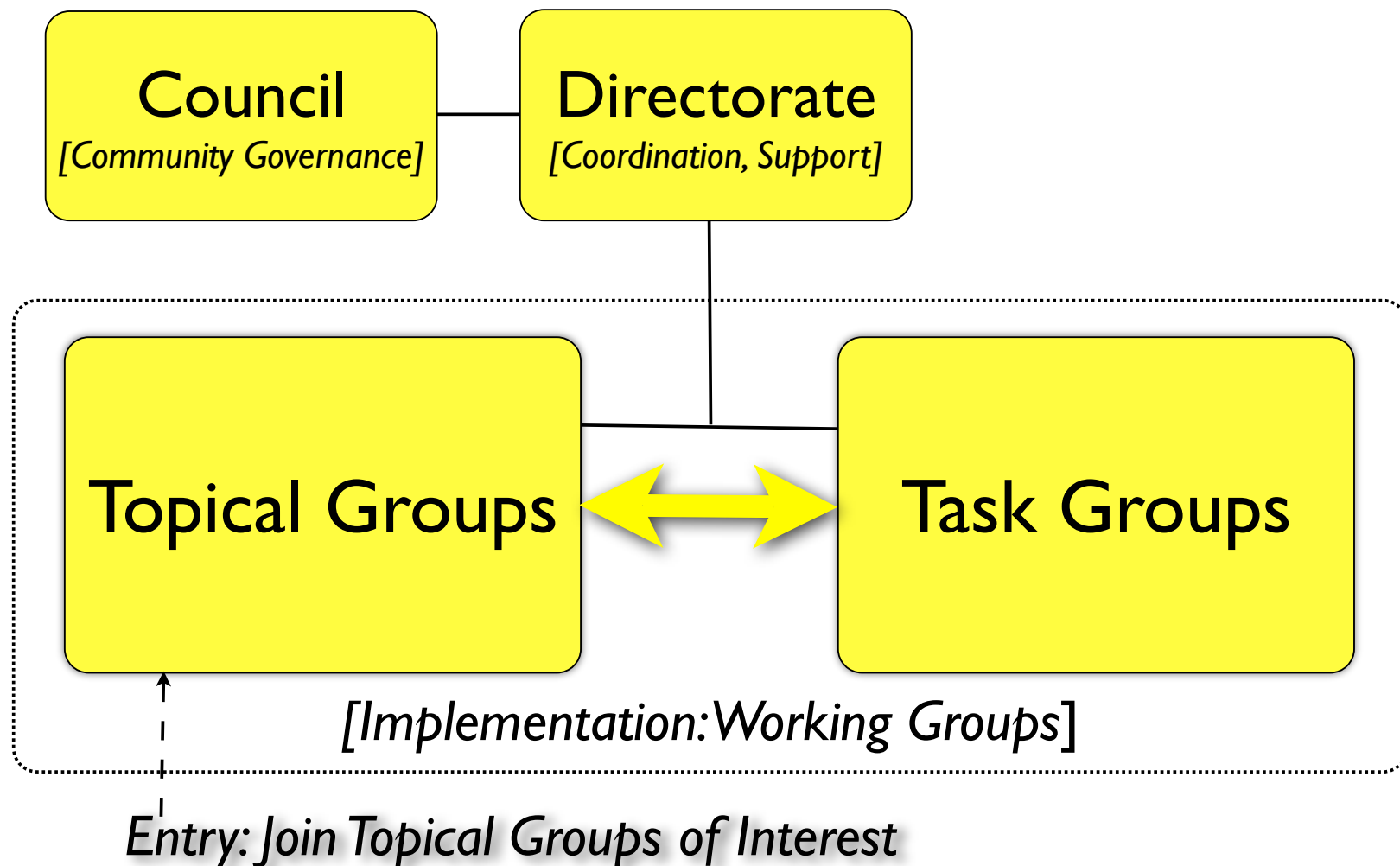
Knowledge Base & Capabilities...



PLASMA AND ENGINEERING SCIENCE TOPICAL AREAS

# USBPO Comprised of 3 Elements

*U.S. BURNING PLASMA ORGANIZATION*





# Council Provides Community Governance

*U.S. BURNING PLASMA ORGANIZATION*

- **Council:**      Chair = James VanDam (U. Texas)  
                         Vice-Chair = Amanda Hubbard (MIT)

Steven Cowley (UCLA)

Richard Hawryluk (PPPL)

Gerald Navratil (Col. U.)

Craig Petty (GA)

William Nevins (LLNL)

George Tynan (UCSD)

Steven Allen (LLNL)

Earl Marmor (MIT)

Martin Peng (ORNL)

David Petti (INEEL)

John Sarff (U. Wisc.)

Michael Zarnstorff (PPPL)

*ex-officio:* Stanley Milora (IPO Chief Technologist, ORNL)

Raymond Fonck (USBPO Dir.; IPO Chief Scientist)

*OFES Program Managers:* Erol Oktay (Science)

Gene Nardella (Technology)



# Council Pursues Policy and Planning

*U.S. BURNING PLASMA ORGANIZATION*

- Reviews and advises on new activities and issues
  - Overall structure
  - e.g. EAct study
  - USBPO - ITPA coordination
  - Help identify and recruit leadership candidates
- Monitors BPO activities thru Directorate
  - Bi-weekly conferences with Chair, Vice-Chair, Director, Dep, Director, OFES
  - Full Council videoconference ~ quarterly
- Charter development
  - Define policies and rules for organization
- Strategic Planning Activity for BP research



# Directorate Manages USBPO Activities

*U.S. BURNING PLASMA ORGANIZATION*

- **Directorate:**
  - Director = Raymond Fonck (UW)
  - Deputy Director = Tony Taylor (GA)
  - Research Committee = Topical Group Leaders
  - Admin = Joan Welc-Lepain (UW)
  - Communications = James Dekock (UW)
- **Develops and guides daily USBPO activities**
  - Topical and Task Groups: identify and manage BP research activities
  - Identifying and recruiting participants, with Council
  - Interfaces BPO with ITER Project Office and other orgs (e.g., ITPA)
  - Communication and information
    - Workshops, tech mtgs, FESAC, BPM, NRC, ITPA, etc.
    - Outreach and education





# Topical Groups = Focus of BP Research

*U.S. BURNING PLASMA ORGANIZATION*

Topical Group	Leader	Deputy Leader
<i>MHD, Macroscopic Plasma Physics</i>	Jon Menard (PPPL)	Chris Hegna (UW)
<i>Confinement and Transport</i>	Paul Terry (UW)	Ed Doyle (UCLA)
<i>Boundary</i>	Dennis Whyte (MIT)	Tom Rognlien (LLNL)
<i>Plasma-Wave Interactions</i>	Cynthia Phillips (PPPL)	Steve Wukitch (MIT)
<i>Energetic Particles</i>	Raffi Nazikian (PPPL)	Bill Heidbrink (UCI)
<i>Fusion Engineering Science</i>	Nermin Uckan (ORNL)	Rich Nygren (SNL)
<i>Modeling and Simulation</i>	Don Batchelor (ORNL)	Jon Kinsey (Lehigh)
<i>Operation and Control</i>	Dave Humphreys (GA)	Dave Gates (PPPL)
<i>Diagnostics</i>	Rejean Boivin (GA)	Jim Terry (MIT), Steve Allen (LLNL)
<i>Integrated Scenarios</i>	Chuck Greenfield (GA)	Chuck Kessel (PPPL)



# Research Committee Organizing Research Tasks

---

*U.S. BURNING PLASMA ORGANIZATION*

- Bi-weekly videoconference
  - Chaired by Deputy Director - T.Taylor
- Various Tasks undertaken to date
  - Communications standards and tools
  - ITER CODAC
  - Burning Plasma issues identification
  - ITER Physics Tasks for 2005-2006
  - ITER Physics Tasks for 2006-2007
  - ITER Issue Card contributions
  - EPAct BP Planning activity



# 2005-2006 ITER Physics Tasks In Progress

*U.S. BURNING PLASMA ORGANIZATION*

- **RWM Control** (G. Navratil)
  - Simulations of RWM feedback; feedback coil design for ITER; sensor noise
- **VDE, Disruptions and their mitigation in ITER** (D. Whyte)
  - Halo current models, VDE simulation, gas injection mitigation
- **Fast particle Confinement** (N. Gorelenkov)
  - Effects of TAE modes, fishbones, and TF ripple on fast particle losses
- **Effects of Radiation Transfer on Divertor Plasma** (B. Lipschultz)
  - Assess physics in codes for predicting effects of opacity and radiation transfer
- **ICRF Heating and Current Drive** (F. Jaeger)
  - Benchmarking ICRF codes for ITER plasma and antenna

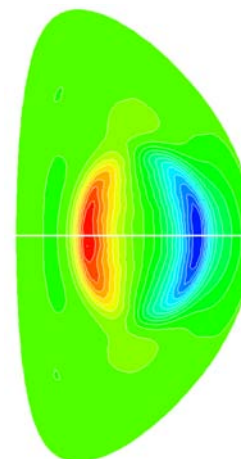
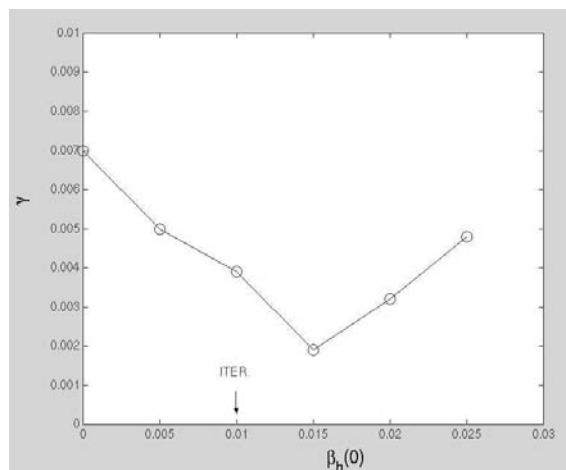
# 2005-2006 ITER Physics Task - I

*U.S. BURNING PLASMA ORGANIZATION*

## • M3D predicts stability of fishbone mode in ITER

Alphas beta ( $\sim 1\%$ ) is less than required for fishbone excitation ( $> \sim 1.5\%$ , Fu G.-Y. IAEA-2006)

Thermal ion kinetic effects reduce ideal kink mode (sawtooth) by half (Kruskal-Oberman), but do not completely stabilize



## • Quasilinear Analysis of TAE instability in ITER

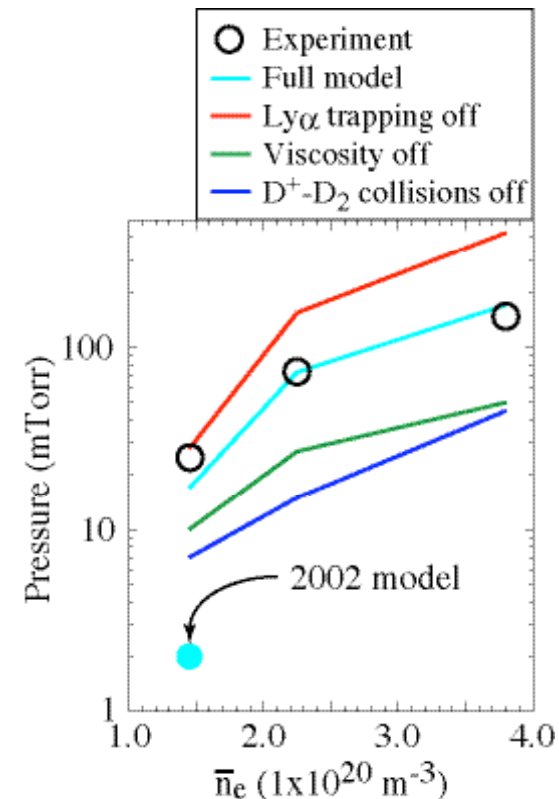
- Global nature can cause alpha particle loss
- Strong Pa gradient + low shear = strong TAE

# 2005-2006 ITER Physics Task - 2

## Accomplishments & plans ~ Neutrals C-Mod results critical to benchmark ITER models for He exhaust

Alcator  
C-Mod

- C-Mod neutral densities uniquely span that of ITER
  - $\lambda_{D_2-D_2} \sim 1.3-7.8 \text{ mm} \ll L_{\text{Divertor}}$
  - $\lambda_{D^+-D_2} \sim 1-8 \text{ mm}$ , small compared to divertor fan
  - Photon absorption mean free paths  $\sim 1 \text{ mm}$
- **⇒ excellent test of codes for ITER (US-ITER task)**
  - Lyman alpha trapping - affects the ionization - recombination balance and access to detachment
  - Short neutral mean free path regimes - strongly affects neutral balance and pumping
- Recent inclusion of above processes leads to much closer match to C-Mod divertor pressures (x5)
  - Very positive result for ITER pumping
- **Status and plans**
  - Finish interpretive modelling
  - Move on to self-consistent predictive modelling
  - Divertor Ly $\alpha$  tomography in C-Mod





# U.S. ITER Physics Tasks Proposed for 2007

*U.S. BURNING PLASMA ORGANIZATION*

- Used existing info to start
  - ITPA priorities; 2005-2006 ITER tasks; USIPO WBS needs; USBPO Workshop; etc.
- Topical Group leaders engaged community for ideas
  - Ongoing discussions on BPO forums
- 76 discrete tasks identified
- High-priority list of 14 advanced to USIPO
  - Used well-defined metrics for evaluation
- Working with USIPO to refine & discuss with ITER team
  - Led by N. Uckan, assisted by C. Greenfield and J. Menard
  - Identifying participants and work plans
  - Topical/Task groups will perform the chosen Tasks



# Final List of Recommended ITER Physics Tasks

*U.S. BURNING PLASMA ORGANIZATION*

- Active coil system for ELM suppression and RWM stabilization
- ITER disruption mitigation system design and physics understanding
- Tritium retention and H/D/T control
- Requirements for stabilization of (3,2) and (2,1) NTMs
- Limitations to startup flexibility for advanced scenarios
- ELM mitigation
- ICRF antenna performance and coupling studies
- Critical assessment of heating and current drive mix on ITER and impact on achievable scenarios
- Review measurement requirements related to US diagnostic packages
- Evaluate the feasibility of lost and confined fast ion diagnostic systems for ITER
- ITER CODAC architecture design
- ICRF heating and current drive scenarios (time-independent)
- Development of improved pedestal and L-H transition predictive capabilities and impact on ITER design and performance.
- Locked-modes and error field correction specification



# ITER Issue Card Process: Community Participation in the ITER Design Review

*U.S. BURNING PLASMA ORGANIZATION*

- Identification of Issues in ITER reference design
  - On-going ITER design review process - *see Town Meeting Tues, Night*
- Sub-comm extracted 1st set from 14 priority tasks
  - Some additions from Res Comm and sifting for design impact
  - Initial list of 11 forwarded to USIPO for discussion
- Initial group advanced forward by USIPO
  - Refine and expand as feedback obtained
- Topical Groups engaged to ID more as needed
  - Reaching out to community membership

**(details at <http://www.burningplasma.org>)**





# Developing a BP/ITER Research Plan

*U.S. BURNING PLASMA ORGANIZATION*

- Energy Policy Act of July, 2005 called for a Plan for US Participation in ITER
  - The U.S. research agenda for ITER
  - Methods to evaluate whether ITER is promoting progress toward making fusion a reliable and affordable source of power
  - Description of how work at ITER will relate to other elements of US fusion program.
- DoE/OFES asked USBPO to help develop this Plan
  - Consultation with FESAC
- EAct Task Group formed to produce this
  - Sent to OFES in early June 2006; available on BPO web site



# Overview

***U.S. BURNING PLASMA ORGANIZATION***

- **Introduction**
  - Uniqueness = *strong-coupling* in burning plasma
  - Focus of U.S. program = *predictive understanding* of the fusion plasma system
  - Organize plan around previously identified priority campaigns
  - Always recognize tight coupling to international community planning
- **Research community structure is evolving to adapt to anticipated modes of participation**
  - Participation in USIPO
  - Members of international ITER Organization
  - Visiting participant scientists
  - ITPA
  - USBPO
  - Multilateral IEA and U.S. bilateral agreements



# (i) The U.S. research agenda for ITER: Aligned with Science Campaigns

*U.S. BURNING PLASMA ORGANIZATION*

- Specific long-term goals require near-term preparatory research
  - Determines the near-term agenda for U.S. program over next decade or so
  - A range of topics identified
  - Plan backwards from goals...

- **Examples:**

- Macroscopic Plasma Physics:
  - Goal on ITER: Stabilize pressure-limiting instabilities*
  - ITER Time Frame: Modest gain Non-inductive Phase*
  - Preparatory Research: Define suitable control coil systems for ITER*

- Waves and Energetic Particles:
  - Goal on ITER: Understand instabilities driven by alpha-particles*
  - ITER Time Frame: High gain DT Phase*
  - Modest gain Non-inductive Phase*
  - Preparatory Research: Investigate energetic particle instabilities*
  - Develop alpha particle diagnostics*



# (i) The U.S. research agenda for ITER: Specific Tasks for Each Campaign

**U.S. BURNING PLASMA ORGANIZATION**

## Research Agenda for ITER

	2005	2010	2015	2020	2025	2030	2035
Phases of ITER Development	DESIGN SUPPORT		PRE-OPERATIONS	COMMISSIONING First Plasma	HIGHER GAIN DT	MODEST GAIN DT LONG PULSE, NON-INDUCTIVE	FUSION TECHNOLOGY TESTS
Fusion Science Campaigns	DESIGN SUPPORT		PRE-OPERATIONS	COMMISSIONING First Plasma	HIGHER GAIN DT	MODEST GAIN DT LONG PULSE, NON-INDUCTIVE	FUSION TECHNOLOGY TESTS
The Integrated Burning Plasma System	High energy gain long pulse inductive scenarios for ITER Develop integrated plasma model Develop integrated plasma control		High energy gain steady-state scenarios for ITER		Achieve high gain long pulses in ITER Study alpha heating effects Establish integrated model on ITER Control complex, burning plasmas in ITER	Achieve modest gain steady-state capability in non-inductive plasmas	Optimize gain in non-inductive plasmas High duty cycle operation in burning plasma
Macroscopic Plasma Physics	Design suppression coils for pressure limiting instabilities	Develop disruption avoidance and mitigation methods Specify RF systems to stabilize confinement limiting instabilities	Mitigate disruptions in ITER	Suppress confinement limiting instabilities in ITER		Stabilize pressure limiting instabilities in ITER	
Waves and Energetic Particles	Resolve RF and microwave issues Investigate energetic particle instabilities	Specify Upgrade of H&CD systems for ITER Develop alpha particle diagnostics			Achieve 100% non-inductive current drive in ITER Understand instabilities driven by alpha particles		
Multi-Scale Transport Physics	Understand electron heat transport Develop turbulence diagnostics for ITER Decide how to spin the ITER plasma Understand transport barriers				Understand transport in the burning plasma regime Control how the ITER plasma spins Use transport barrier physics to achieve high gain, in ITER		
Plasma-Boundary Interface	Understand edge pedestal physics Identify approaches to minimize the impact of edge instabilities Understand role of density in divertor physics				Achieve a sufficient edge pedestal for high gain Implement edge instability suppression in ITER Understand how to project edge physics		
Fusion Engineering Science	Study first wall material options Participate in a test blanket module program Develop advanced fueling for ITER Support superconducting magnet construction Develop RF sources and wave launchers Develop applicable technique		Handle unprecedented power exhaust Provide central fueling in ITER Assess the performance of power-plant scale magnets Use RF systems to control the plasma		Operate with sufficiently low tritium inventory Deploy, operate, study test blanket modules in ITER Assess the performance of power-plant scale magnets Use RF systems to control the plasma Deploy turbulence and alpha diagnostics		Operate very long pulses for blanket test



## (ii) Methods to evaluate whether ITER is promoting progress toward making fusion a reliable and affordable source of power

*U.S. BURNING PLASMA ORGANIZATION*

- **Metric Class I: Scientific Progress**
  - Focus of U.S. program = development of underlying science and a predictive understanding of the fusion plasma system
  - Comparison of predicted and measured properties of plasma
    - Experimental validation of theory and simulations
    - e.g., explore predicted stability limits once in BP regime
  - Use of knowledge for controlling and extending plasma performance
- **Metric Class II: Energy and Technology Progress**
  - Performance goals: e.g. fusion power, gain, pulse length, etc.
  - Secondary to scientific metrics, but easier to define - need to be careful!



### (iii) Description of how work at ITER will relate to other elements of the U.S. fusion program.

---

*U.S. BURNING PLASMA ORGANIZATION*

- Follow NRC BPAC report: goals for attractive fusion energy
  - Maximize the plasma pressure*
  - Maximize the plasma energy confinement*
  - Minimize the power needed for sustainment*
  - Simplify and increase reliability*
- A portfolio approach used to develop the predictive understanding of magnetic confinement to achieve these goals
  - Experiment in four leading categories
  - Theory and simulation
  - Fusion engineering science and tools
  - Tests of emerging concepts
- Relation to ITER and burning plasma research in an integrated fusion program
  - Support
  - Complement
  - Benefit from



# Future Directions in Developing an Overall Plan for ITER Participation

*U.S. BURNING PLASMA ORGANIZATION*

- Further develop specific goals and timescales
  - Long-term BP Planning Activity in USBPO - Council activity
  - Work with partners through ITPA, USIPO, and ITER for U.S. roles
- Set clear priorities among the tasks
  - As tasks are defined, confront prioritization
  - Lead to suggest BP priorities in near-term domestic research
- Work with FESAC planning activity
  - Address the ITER/BP participation part of the U.S. program



# Getting Involved from Universities

*U.S. BURNING PLASMA ORGANIZATION*

- Find out what's going on
  - Sign up for membership at: <http://www.burningplasma.org/>
  - e-News, Bulletin Boards, e-mail distributions, TG meetings and discussions
  - Suggest new approaches for communications?
- Participate in Topical Group Discussions and Tasks
  - TG videoconferences and satellite meetings (e.g. several here during week)
  - Execute research tasks
  - Propose new activities...
  - Move to leadership positions in areas of interest
- Also: ITER Positions posted at <http://www.usiter.org/>
  - National and international





# Topical Groups = Avenue for Identifying, Proposing new BP Activities

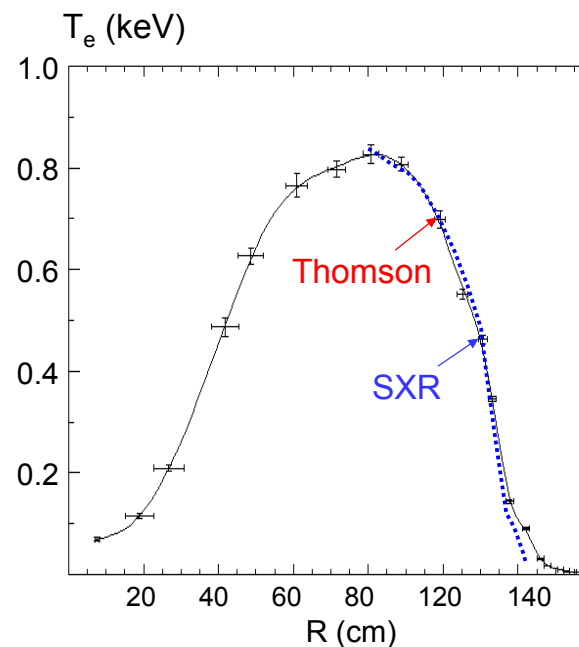
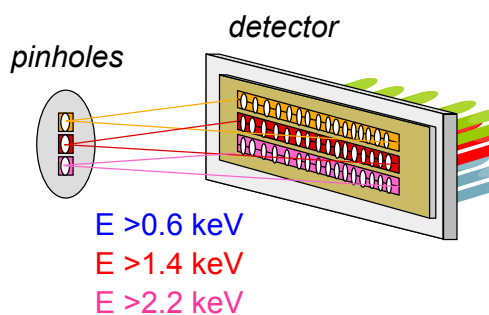
U.S. BURNING PLASMA ORGANIZATION

- Work with colleagues to promote needed research
  - Needs can be communicated to OFES

## Fast $T_e$ measurement on NSTX using multi-energy SXR array

Example (JHU):  
Real-time Pedestal Measurements:

- ELM detection, assessment
- Early RWM detection
- Pedestal MHD
- Reduce demands on TS
- Suitable for BP environment





# What's Going on This Week & Near-Term

*U.S. BURNING PLASMA ORGANIZATION*

- **Topical Group meetings of interested community members**

- |                         |                        |                     |                       |
|-------------------------|------------------------|---------------------|-----------------------|
| ● MHD                   | - Menard, Hegna        | Tues 17:30          | Rm 304, Marriot       |
| ● Integrated Scenarios  | - Greenfield, Kessel   | Weds 15:30          | TBD                   |
| ● Modeling & Simulation | - Batchelor, Kinsey    | Tues 16:30          | Tables in poster hall |
| ● Boundary              | - Whyte, Rognien       | Tues after Town Mtg | ITER Town Mtg Rm      |
| ● Plasma-Wave           | - Philips, Wukitch     | Tues after Town Mtg | ITER Town Mtg Rm      |
| ● Transport / Confine   | - Terry, Doyle         | Tues after Town Mtg | ITER Town Mtg Rm      |
| ● Diagnostics           | - Boivin, Terry, Allen | Feb. 6-8            | Workshop @ GA         |
| ● Control and Ops       | - Humphreys, Gates     | TBD (see web site)  | Videoconference       |

- **Council Meeting (Weds 12:00 )**

- Review of BPO activities
- Charter development
- Search Committee for new Director nominees



# New USBPO Director Search Starting...

*U.S. BURNING PLASMA ORGANIZATION*

- Interactive process planned

- Council to suggest candidates slate for OFES
- Input from USIPO (Director = US-ITER Chief Scientist)
- Appointment by OFES

- Council Search Subcommittee

A Hubbard - MIT (chair)

R. Hawryluk - PPPL

W. Nevins - LLNL

T. Taylor - GA

J. Sarff - UW

- Suggestions from community welcome and desired!



# Summary

*U.S. BURNING PLASMA ORGANIZATION*

- **First-cut USBPO organization is established**
  - Structural elements: Council, Topical Groups, etc.
  - Quickly becoming a functional research organization
- **Several Tasks addressing near-term issues**
  - Physics Tasks proposed; Issues Card process underway
  - Strategic planning for BP research in U.S.
- **Starting technical/research activities**
  - Identifying and initiating BP research tasks
  - Main focus of next year
- **Participate in Topical Groups to get involved...**